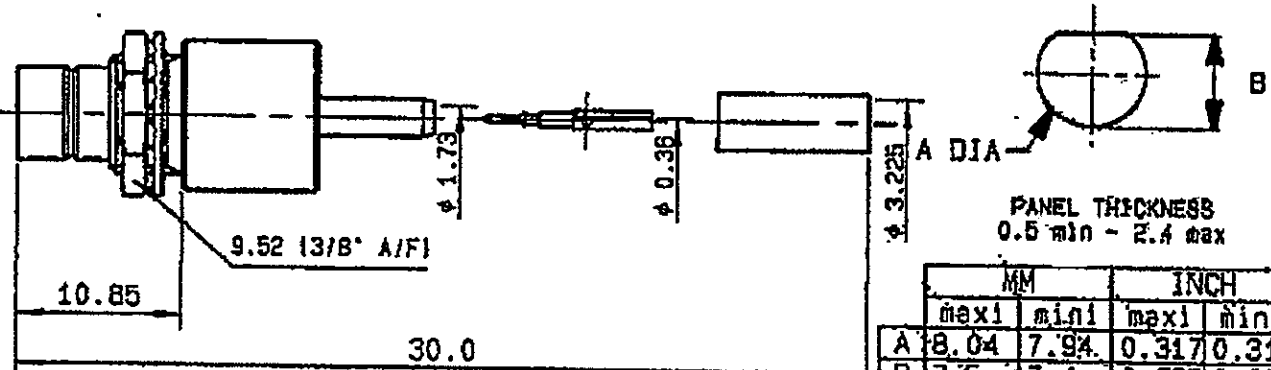


**STRAIGHT CONNECTOR MALE CRIMP TYPE**  
**CABLE 2.6/75 DS PACK 100**

**R214.314.302**  
**SERIES T43**

PLUG 43/4FS

PERCAGE PANNEAU  
 MOUNTING HOLE



	MM		INCH	
	maxi	mini	maxi	mini
A	8.04	7.94	0.317	0.313
B	7.5	7.4	0.295	0.291

PANEL THICKNESS  
 0.5 min - 2.4 max

NOMINAL IMPEDANCE	75 $\Omega$
FREQUENCY RANGE	0-3 GHz
TEMPERATURE RATING	-40/+100 °C
V.S.W.R	1.2 + x.F(1GHz)Max
RF INSERTION LOSS	NA $\sqrt{F}$ (GHz) dB Max
VOLTAGE RATING	500 Veff Max
DIELECTRIC WITHSTANDING VOLTAGE	1500 Veff Min
INSULATION RESISTANCE	5000 M $\Omega$ Min
HERMETIC SEAL	NA Atm.cm <sup>3</sup> /s
LEAKAGE (pressurized only)	NA MPa
MECHANICAL DURABILITY	250 Cycles
WEIGHT	9 gr
SPECIFICATION	

CABLES RG 179  
 RG 187

OTHERS CHARACTERISTICS

CABLE RETENTION	150 N Min
CENTER CONTACT RETENTION	
Axial force - mating end	22 N Min
Axial force - opposite end	NA N Min
Torque	NA cm.N Min
RECOMMENDED TORQUES	
Mating	NA cm.N
Panel nut	170 cm.N
Clamp nut	NA cm.N

CONNECTOR PARTS

MATERIALS

BODY	BRASS
OUTER CONTACT	
CENTER CONTACT	BRASS
INSULATOR	PTFE
GASKET	
OTHERS PIECES	BRASS

FINISH

(all values are given in micrometers)

GOLD 0.5 OVER NICKEL 2
GOLD 1.6 OVER NICKEL 2
NICKEL 2

KAN DE A

ISSUE 9832B02	CREATION DATE 20-FEB-97	FILE PART-NUMBER C9705
------------------	----------------------------	---------------------------



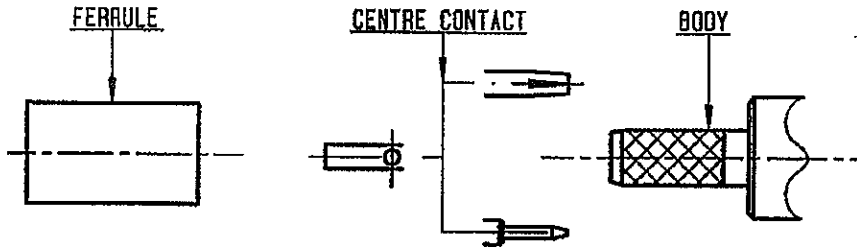
The information given here is subject to change without notice. Design changes may be in order to improve the product.

Connect to the future



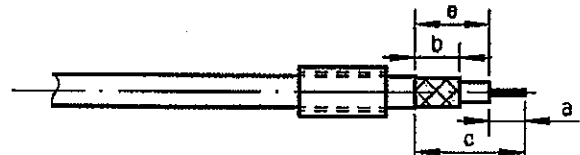
**R214.314.302**

ISSUE 9832B02 SERIES T43



①

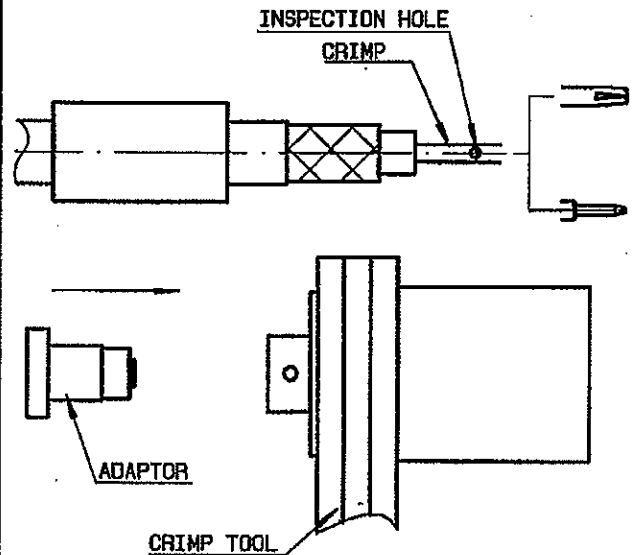
Slide ferrule onto cable.  
Strip cable.



Stripping	a	b	c	d	e
inch	0.177	0.315	0.827	0	0.65
mm	4.5	8	21	-	16.5

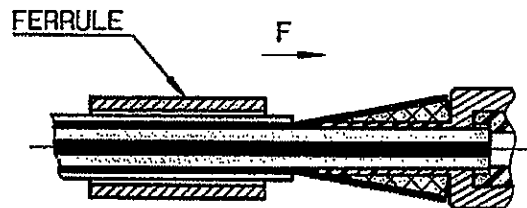
②

Place centre contact on conductor, (ensure conductor is visible through inspection hole).  
Place adaptor in crimp tool.  
Insert cable into adaptor. Push home.  
Crimp centre contact.  
Crimp tool R282 281 010 (G92434)



③

Guide dielectric into connector while fanning braid. Push home until centre contact 'clicks' into place.



④

Slide crimp sleeve forward until sleeve butts up against body.  
Crimp ferrule.  
Crimp tool R282 287 000 (G92316) + die set R282 265 001 (G92441) (Hex. 3.25).

